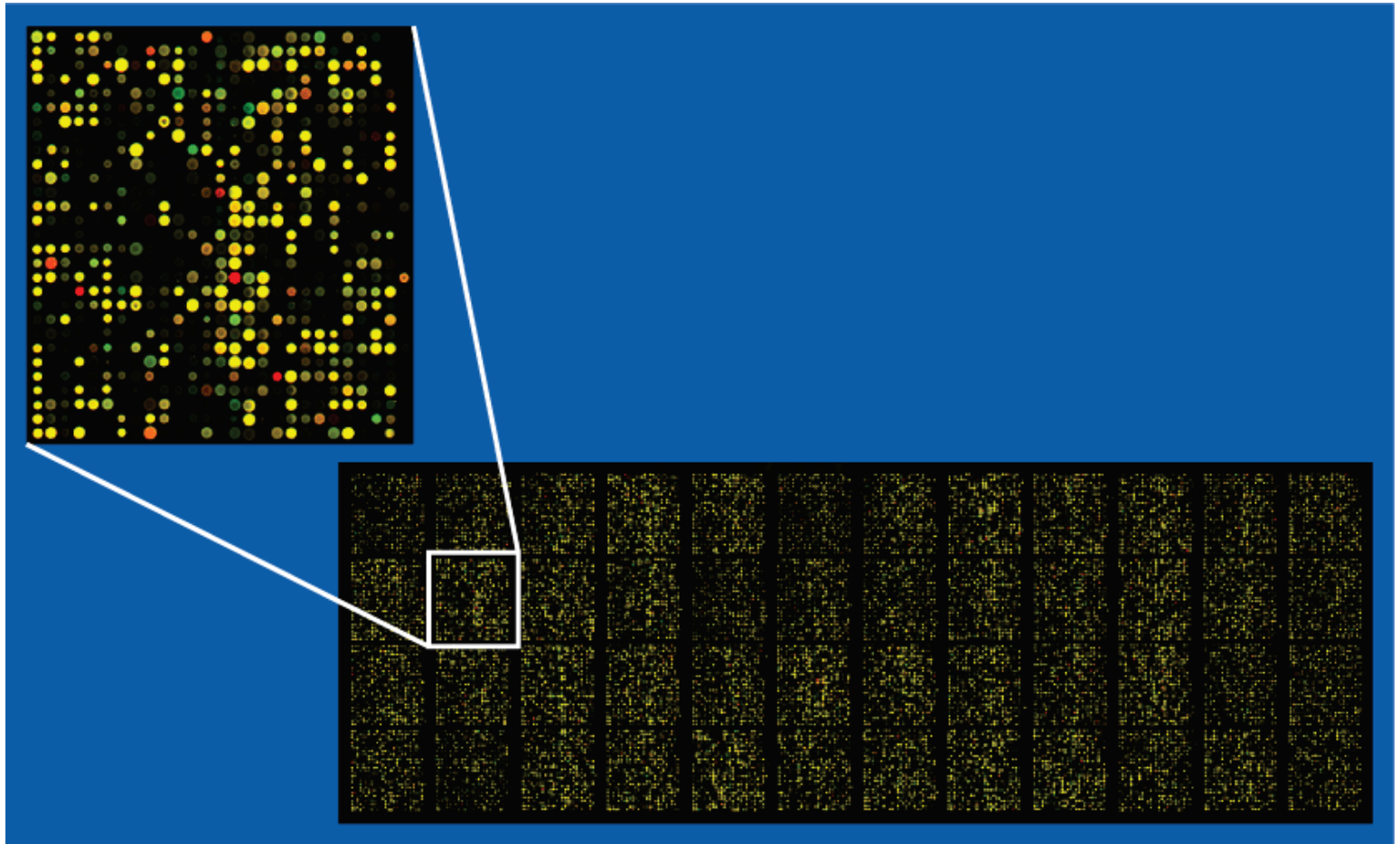
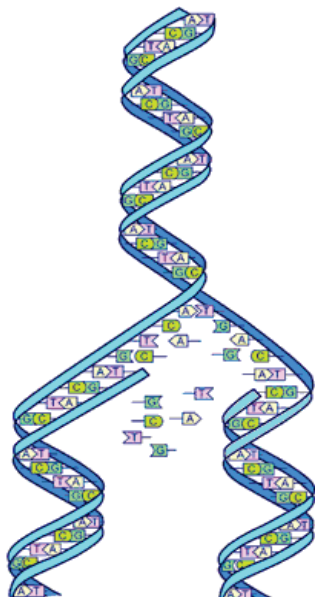


# EXPANDING BIOTECHNOLOGY



**Phase I Unit**  
Canton, Ohio

**GABRAIL CANCER CENTER RESEARCH**



## Expanding the Biotechnology Corridor

### ADDITION OF PHASE I UNIT IN STARK COUNTY, OHIO

Gabrail Cancer Center Research (GCCR), a subsidiary of Gabrail Cancer Center, is announcing the opening of a comprehensive Phase I unit for experimental agents. GCCR's successful experience with the oncology drug development program, including 20 completed and an additional 9 on-going Phase I trials, will certainly guarantee the success of this expansion. This unit will provide a state-of-the-art, high quality and cost-effective Phase I program for a plethora of experimental agents launched in December 2009 by GCCR.

### BRINGING NOVEL CLINICAL TRIALS INTO THE COMMUNITY

#### EXPERIENCE

GCCR's twelve year experience in conducting over 120 clinical trials, including 29 Phase I trials enrolling in excess of 2600 patients, proves that they have the knowledge, infrastructure, and dedication required to conduct clinical trials.

GCCR has been the first site to be initiated in more than 50% of the trials conducted at the site. In 20% of the trials done at GCCR, they rank as the top-enrolling site; and, in 65% of the trials, they rank among the top 3 enrolling sites. By using central IRBs, GCCR shortens the time for site initiation by an average of 145 days, according to the experts. GCCR fully comprehends that time is money, and money is important.

The track record of GCCR in patient retention on any clinical trial is 95%; and, their screen failure rate has been less than 10%.

#### INFRASTRUCTURE

The newly-established Phase I unit has dedicated monitored beds with overnight stay capabilities. It is situated in a 50,000 sq. ft. modern building on eight acres of land in the Belden Village commercial district. Shopping malls and restaurants are within walking distance.

The Phase I unit is equipped with a comprehensive, CLIA-certified lab which includes hematology and comprehensive chemistry analyzers. Several refrigerators and deep freezers, centrifuges (including a cooling centrifuge) are on site. The paperless electronic medical record (EMR) software is a plus providing state-of-the-art data storage and retrieval.

### GCCR SNAPSHOT

- Conducting clinical trials since 1999
- Located in northeast Ohio near several colleges and universities
- Experienced staff dedicated to clinical trials
- Monitored beds
- Knowledgeable, nationally recognized lead physician dedicated to the advancement of medicine

## LOCATION

Canton, Ohio, is a college town harboring seven colleges and universities within a 10-mile radius of the site. This has been a resource for recruitment of volunteer subjects for the Phase I unit. Furthermore, college students are trained in the Gabrail Cancer Center Research facility providing a continuous stream of potential, qualified employees.

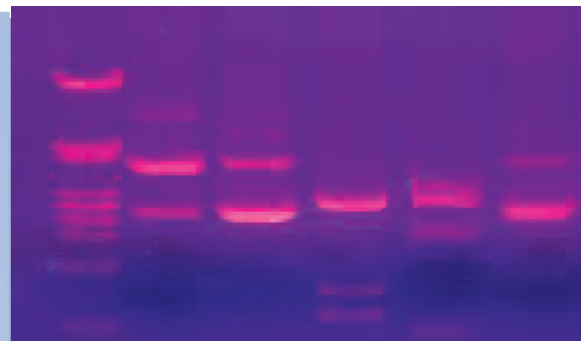
A biotechnology corridor is evolving in this region stretching from Cleveland to Canton. This area has attracted more than \$100 million in venture capital investment and several hundred million more in grants and government subsidies. This funding is critical in advancing the region as a future capital for medical and biotechnology research.

## DEDICATION

GCCR has established an infrastructure of cadre experienced in patient accrual and accurate data collection, making it one of the most sought out research site worldwide. Most of the Phase I studies and many of the Phase II protocols included pharmacokinetics (PK) and pharmacogenomic (PG) sampling. Our staff is well-trained and experienced in accomplishing these tasks with the utmost accuracy and timeliness.

## OUR PHILOSOPHY

Our philosophy is, ***“Deliver what we promise: Timeliness, accuracy, and accountability.”*** By accruing and retaining subjects, administering trial therapies flawlessly, and delivering accurate data in a timely fashion, sponsors and CROs will be able to quickly and effectively attain their goals.



## OUR PHILOSOPHY

Delivering what we promise:

- ✓ **Timeliness**
- ✓ **Accuracy**
- ✓ **Accountability**

## NASH GABRAIL, M.D.

As the president of GCCR, Dr. Gabrail has established a track record of scientific thought and dedication to clinical research and new drug development. He has received national recognition earning several national awards for excellence in clinical research. The clinical research program at GCCR has resulted in 28 publications and presentations in peer review journals and scientific meetings.

Dr. Gabrail is a widely-sought expert in the field of clinical trial protocol design and review of established protocols. His financial and economic expertise in the field of new drug development has helped several mergers and acquisitions of small biotech companies.

National recognition has earned Dr. Gabrail a consulting position with the FDA, advising the agency on the merits of drugs submitted for FDA approval.

As the author of *Good Medicine is Cheaper Medicine*, Dr. Gabrail understands that we have to be cost conscious in the new drug development program if America is to keep the leadership role in medicine, science, and technology. Area politicians and elected officials from the region have been a strong support of our center. They are sparing no effort in advancing our cause: bringing good things to the community.



## GABRAIL CANCER CENTER RESEARCH

4875 Higbee Ave NW  
Canton, OH 44718

Phone (330) 492-3345

Fax (330) 492-7643

Email: [research@GabrailCancerCenter.com](mailto:research@GabrailCancerCenter.com)

[www.GabrailCancerCenter.com](http://www.GabrailCancerCenter.com)